

The Dragon Challenge

Activity Book



Name:

School:



The Welsh Parliament is the democratically elected body that represents the interests of Wales and its people.

Commonly known as the Senedd, it makes laws for Wales, agrees Welsh taxes and holds the Welsh Government to account.

© Senedd Commission Copyright 2024

The text of this document may be reproduced free of charge in any format or medium providing that it is reproduced accurately and not used in a misleading or derogatory context. The material must be acknowledged as copyright of the Welsh Parliament Commission and the title of the document specified.

Information for teachers, parents and carers

Welcome to the Senedd activity trail

This resource is aimed at educating those aged between 5-8 about the Senedd building and the work of the Welsh Parliament.

Our aim is that children will:

- Understand that the Senedd is an important building to the people of Wales
- Learn about the Senedd's sustainable features
- Find out about the role of a Member of the Senedd and the work of the Welsh Parliament
- Think about the issues important to them, such as climate change, education and health

Introduction

Welcome to the Senedd! (se-neth)

Croeso i'r Senedd!

Follow me to find out more about the Senedd and the work that happens here.



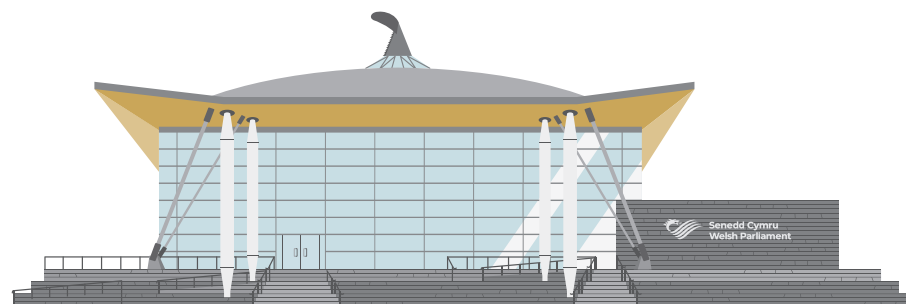
The Senedd

This is a very important building in Wales.

In English, Senedd means 'Parliament' (par-lee-a-ment).

A **Parliament** is a group of people who meet to discuss important issues and make new laws.

In the Senedd, Members meet to talk about important issues that affect people in Wales.



An illustration of the Neuadd building, a modern structure with a prominent glass facade and a sloped roof. A rainwater collection system is shown on the roof, featuring a large, dark, curved gutter that channels water into a series of white downpipes. The building's exterior is primarily light blue and grey, with a yellowish-brown section on the right side. The background is a light teal color.

Exploring the Neuadd

You are now standing in the Neuadd of the Senedd.

Can you guess how we collect rain water?

What do you think we use the rain water for?

How do you think the glass walls help us save energy?

Why is saving energy important?

Maps Of Wales

Start at the three maps of Wales

These maps show lots of places in Wales.

Draw an **X** on this map to show where you live.



Maps Of Wales

What do you like about where you live?

Write or draw your answers below:



The Oriel

Make your way up to the next level.

This is called the **Oriel**, which means 'gallery' in Welsh.

In the middle of the Senedd is the **funnel**.

The funnel is an unusual shape. What does it remind you of?

What material do you think it is made from?



The Oriel

Look up at the ceiling.
What shapes can you see?

Look down below the funnel.
What can you see?



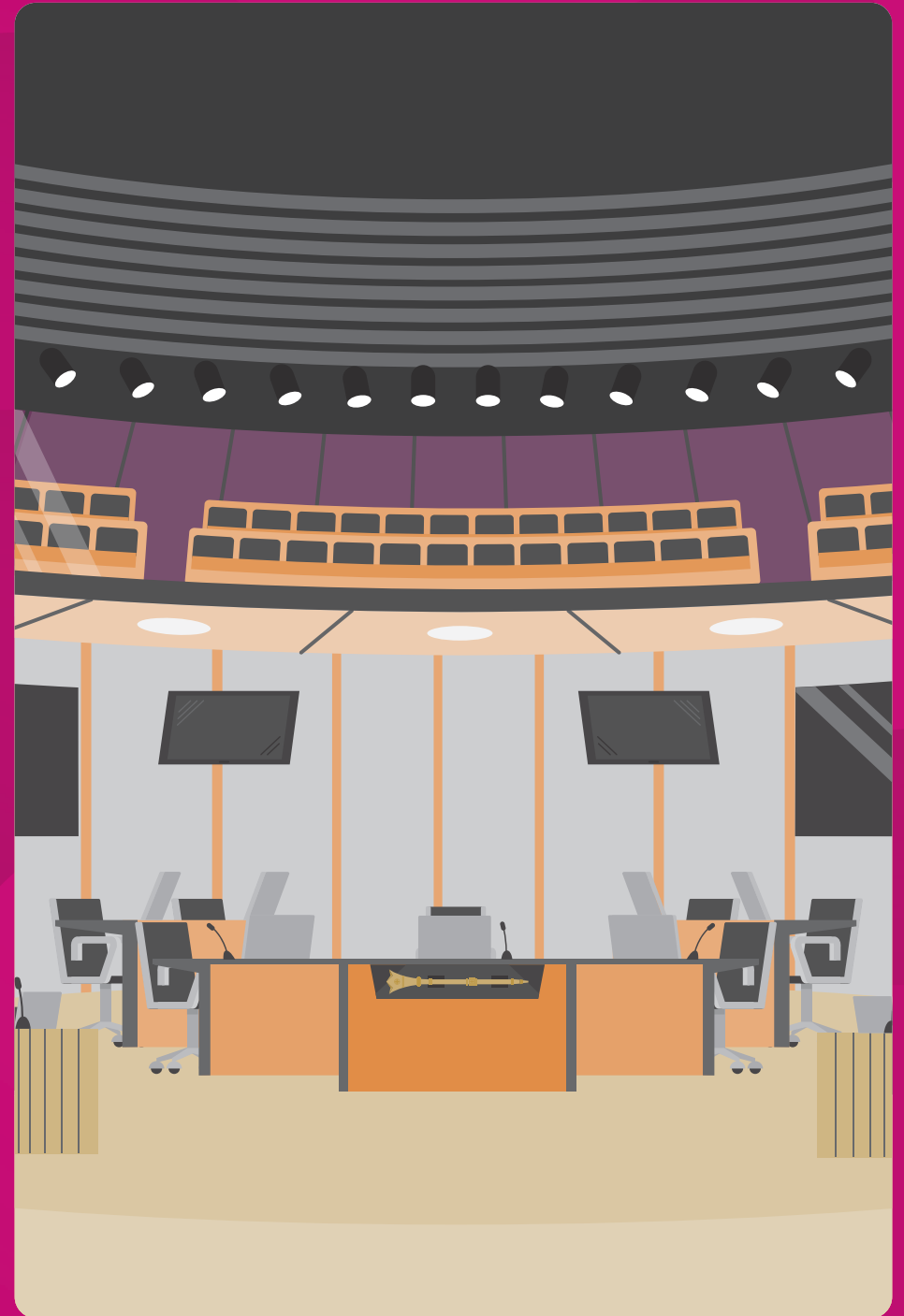
The Chamber

This is the most important room in the Senedd.

The Chamber is where Members meet to talk about important issues and decide new laws for Wales.

Can you think of a new idea to make Wales better?

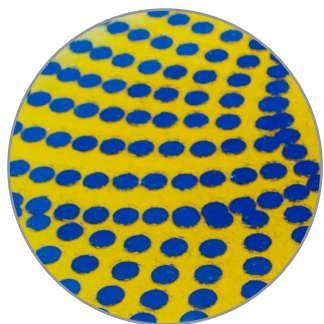
Write or draw your answer here:



Inside the Chamber

There are some interesting things to look at inside the Chamber.

Using these clues, can you find the objects in the pictures?



Draw a line to link the right picture to the right information.

The Mace

You can see the mace in front of where the Presiding Officer sits.

The Mace is made of gold, silver and brass.

It is carried into the Chamber at the start of a new parliament.



The Heart of Wales

Look down to the middle of the floor and you will see this piece of art.

Made of glass and resin, it represents the Senedd at the heart of life in Wales.

Who works in the Chamber?



Elin Jones is the **Llywydd** of the Senedd.

Her job is to make sure everyone has a chance to speak if they want to, and that all Members are treated fairly.



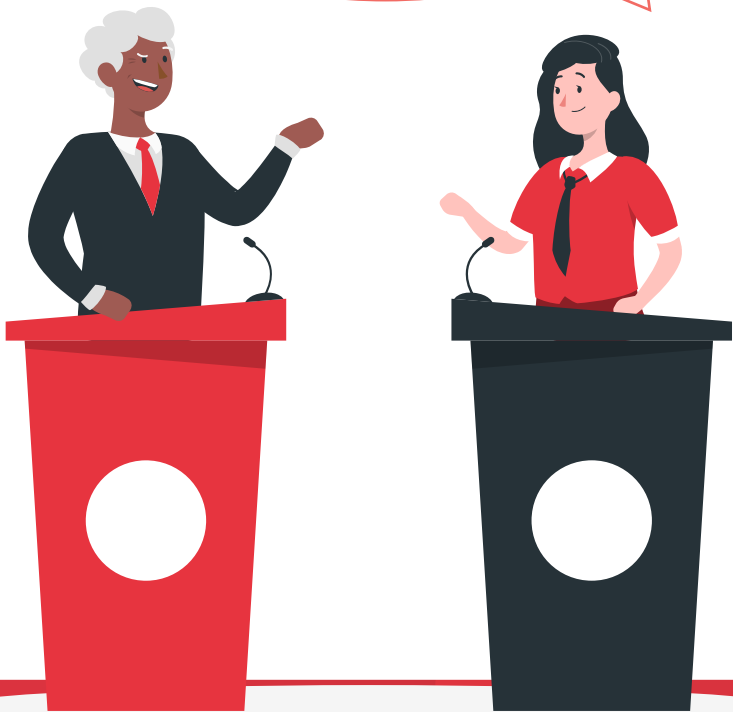
Vaughan Gething is the **First Minister**, and he is the leader of the **Welsh Government**.

The other Members of the Senedd ask him questions every week in the Chamber. They check on how Welsh Government is running the country.

The role of a Member

The people in my area voted for me so now I have the job of representing them in the Senedd.

I help make sure that the Government makes the best choices for Wales.



What question would you like to ask your Member of the Senedd?

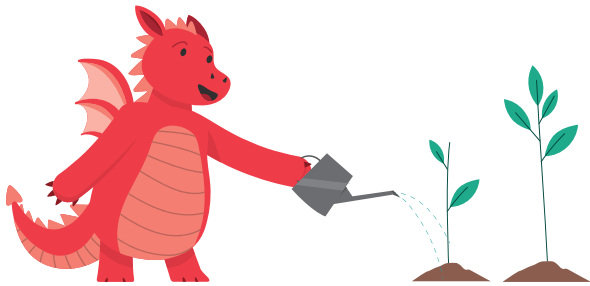
Write or draw your answer below:



The future of Wales

What changes would you like to see where you live?

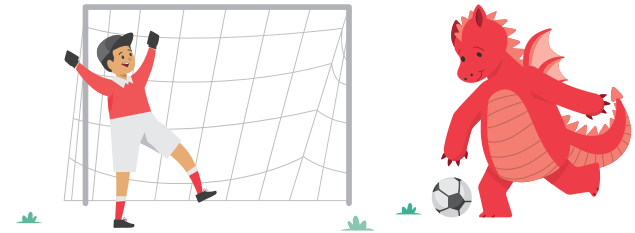
Circle your favourite idea, or add your own.



More plants and trees?



Cleaner streets?



More places to play?

My idea!

Can you find your way
through the Chamber, find
the Heart of Wales in the
centre and back out again?

